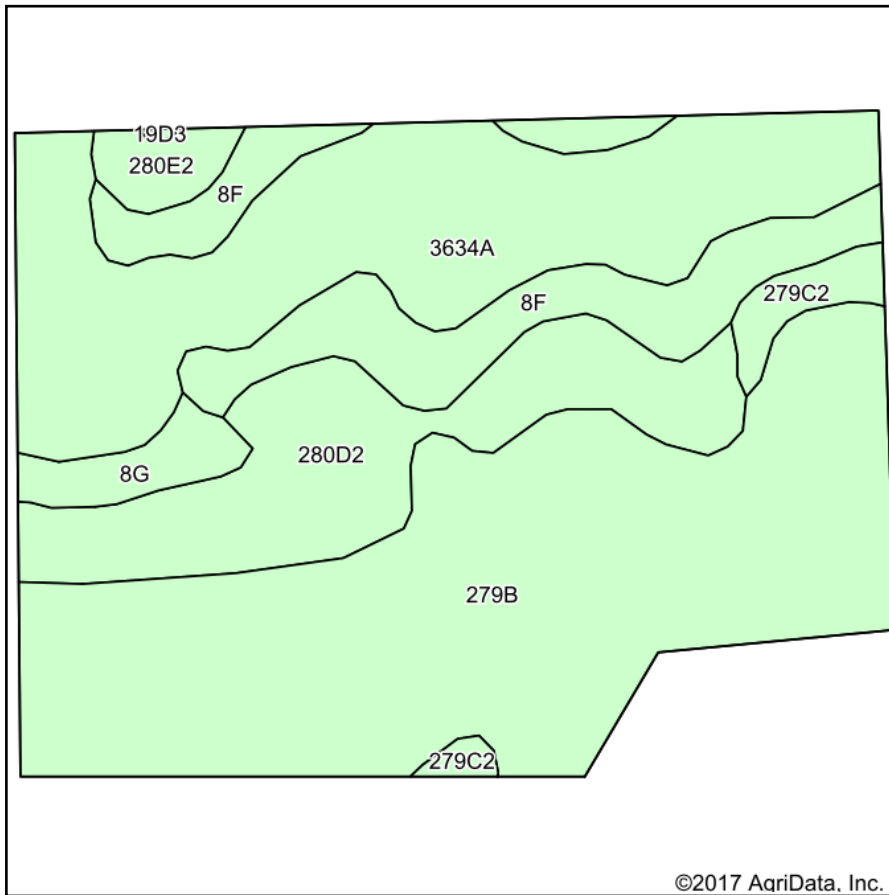
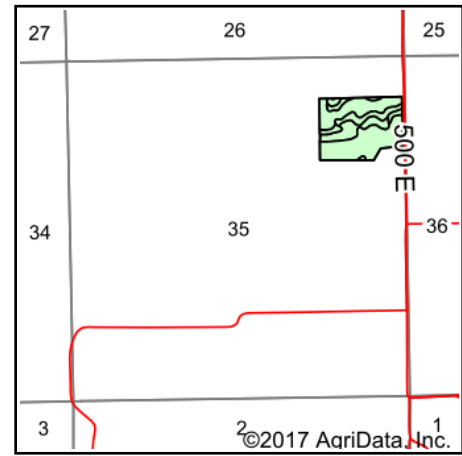


Soils Map



Soils data provided by USDA and NRCS.



State: **Illinois**
 County: **Fulton**
 Location: **35-3N-1E**
 Township: **Astoria**
 Acres: **27.66**
 Date: **10/2/2017**

Maps Provided By:

 CUSTOMIZED ONLINE MAPPING
 © AgriData, Inc. 2017 www.AgriDataInc.com



Area Symbol: IL057, Soil Area Version: 11

Code	Soil Description	Acres	Percent of field	Il. State Productivity Index Legend	Corn Bu/A	Soybeans Bu/A	Crop productivity index for optimum management
**279B	Rozetta silt loam, 2 to 5 percent slopes	11.58	41.9%		**162	**50	**119
3634A	Blyton silt loam, 0 to 2 percent slopes, frequently flooded	7.06	25.5%		171	55	126
**280D2	Fayette silt loam, glaciated, 10 to 18 percent slopes, eroded	4.01	14.5%		**149	**47	**109
**8F	Hickory silt loam, 18 to 35 percent slopes	3.29	11.9%		**86	**29	**65
**8G	Hickory silt loam, 35 to 60 percent slopes	0.65	2.3%		**58	**20	**44
**279C2	Rozetta silt loam, 5 to 10 percent slopes, eroded	0.59	2.1%		**153	**47	**112
**280E2	Fayette silt loam, 18 to 25 percent slopes, eroded	0.48	1.7%		**125	**40	**92
Weighted Average					150.1	47.4	110.5

Table: Optimum Crop Productivity Ratings for Illinois Soil by K.R. Olson and J.M. Lang, Office of Research, ACES, University of Illinois at Champaign-Urbana. Version: 1/2/2012 Amended Table S2 B811

Crop yields and productivity indices for optimum management (B811) are maintained at the following NRES web site:

<https://www.ideals.illinois.edu/handle/2142/1027/>

** Indexes adjusted for slope and erosion according to Bulletin 811 Table S3

Soils data provided by USDA and NRCS. Soils data provided by University of Illinois at Champaign-Urbana.

*c: Using Capabilities Class Dominant Condition Aggregation Method